

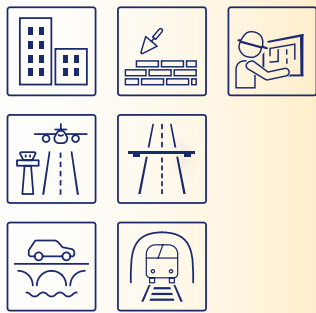
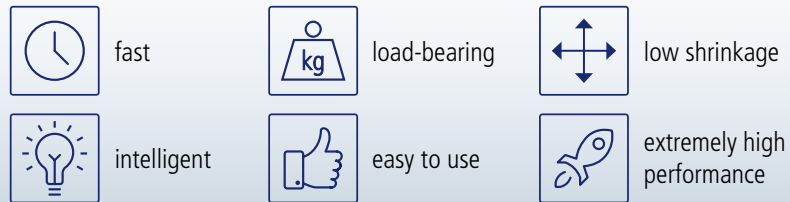


Rapid Set® Cement Technology faster. easier. **unique.**



Rapid Set
changes the game!

The ONE-FOR-ALL



maximum versatility
multiple applications
with one product



30 % less CO₂ emissions
compared to Portland cement
4 times longer lifetime than
Portland cement


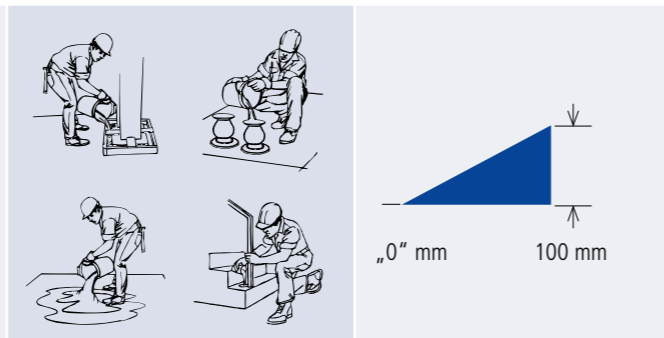

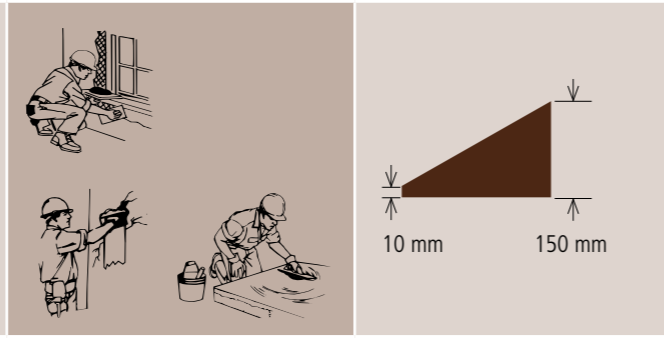

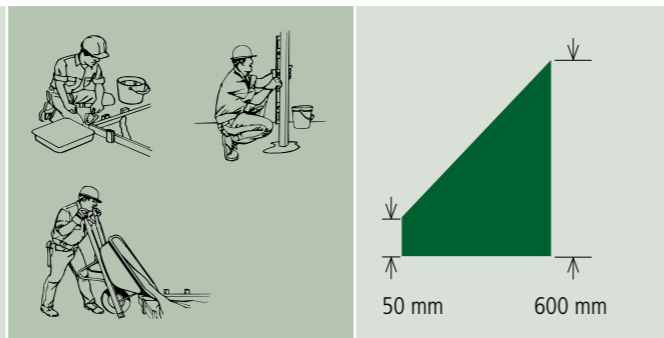
ALL IN ONE!


Maximum profitability through maximum efficiency!





- ✓ efficient work performance
- ✓ cost reduction
- ✓ multipurpose
- ✓ fast usability
- ✓ long-term durability
- ✓ optimizing logistics
- ✓ minimizing downtimes
- ✓ superior quality
- ✓ 12 months shelf-life

Unique Rapid Set® Products

	FIELDS OF APPLICATION	LAYER THICKNESS	INITIAL SET ¹⁾	READY FOR TRAFFIC ¹⁾	READY FOR COVERING ¹⁾ after approx. 2 hours ³⁾ after approx. 16 hours ³⁾	COMPRESSIVE STRENGTH ¹⁾ after 60 minutes after 180 minutes after 7 days after 28 days	MODULUS OF ELASTICITY	PHARMACY accelerators, plasticizers, retarders	SULFATE RESISTANCE	FROST/DEICER RESISTANCE	PENETRATION BEHAVIOR	SPECIAL FEATURES
 <p>CEMENT ALL® Multipurpose Repair Mortar</p>	General concrete repair, re-profiling, casting, anchoring, injection, formed work, grouting, industrial and highway construction, civil engineering, precast industry, indoors and outdoors, in wet environments		after 15 min.	after 60 min.	vapor-permeable coverings (e.g. tiles, vapor-permeable color coats) diffusion-proof coverings (e.g. parquet, water-proofing)	> 20,0 N/mm ²	31.700 N/mm ²	<input checked="" type="checkbox"/>	<input checked="" type="checkbox"/>	<input checked="" type="checkbox"/>	<input checked="" type="checkbox"/>	<input checked="" type="checkbox"/> low shrinkage <input checked="" type="checkbox"/> fast-setting <input checked="" type="checkbox"/> high-strength <input checked="" type="checkbox"/> no primer <input checked="" type="checkbox"/> high flowability
 <p>MORTAR MIX Fast Setting Repair Mortar</p>	General concrete repair, re-profiling, underlayment, formed work, road repair, industrial and highway construction, civil engineering, precast industry, indoors and outdoors, in wet environments		after 15 min.	after 60 min.		> 17,0 N/mm ²	26.827 N/mm ²	<input checked="" type="checkbox"/>	<input checked="" type="checkbox"/>	<input checked="" type="checkbox"/>	NPD ²⁾	<input checked="" type="checkbox"/> low shrinkage <input checked="" type="checkbox"/> fast-setting <input checked="" type="checkbox"/> high-strength <input checked="" type="checkbox"/> no primer <input checked="" type="checkbox"/> overhead application
 <p>CONCRETE MIX Very Fast Setting Concrete</p>	General concrete repair, construction of walkways and roads, concrete and machinery foundations, anchoring, formed work, industrial and highway construction, civil engineering, precast industry, indoors and outdoors, in wet environments		after 15 min.	after 60 min.		> 19,0 N/mm ²	30.690 N/mm ²	<input checked="" type="checkbox"/>	<input checked="" type="checkbox"/>	<input checked="" type="checkbox"/>	NPD ²⁾	<input checked="" type="checkbox"/> low shrinkage <input checked="" type="checkbox"/> fast-setting <input checked="" type="checkbox"/> high-strength <input checked="" type="checkbox"/> no primer <input checked="" type="checkbox"/> layer thickness up to 600 mm

 **SET Control** – Additive to slow down the setting time

 **FLOW Control** – Additive to improve the fluidity

 **FAST** – Additive to accelerate the setting time

¹⁾ Technical data at + 20°C and 65 % relative air humidity
²⁾ NPD = No Performance Determined
³⁾ It is recommended to check the residual moisture by suitable measuring method



Advanced Rapid Set® Technology



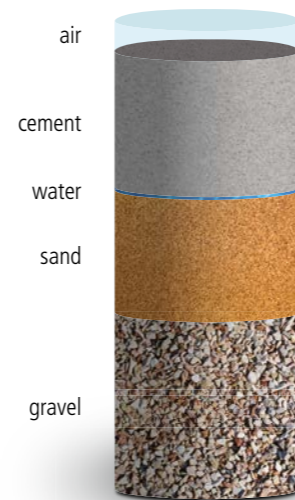
Reaction Process: Comparison between Portland cement and Rapid Set® Cement

The chemical reaction process of conventional Portland cement in comparison to Rapid Set® Cement, a belitic calcium sulfoaluminate (BCSA) cement, differs significantly. Rapid Set® Cement with a w/c ratio = 0,45 binds the added water close to 100 % chemically.

Portland Cement

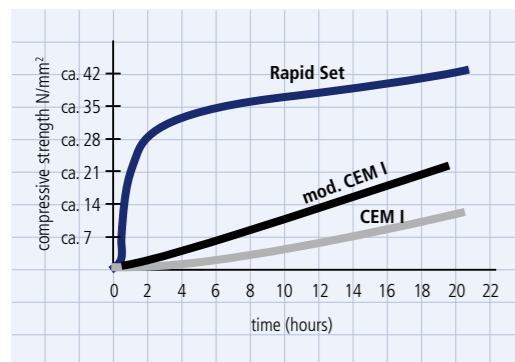


Rapid Set® Cement



Unique Performance of Rapid Set®

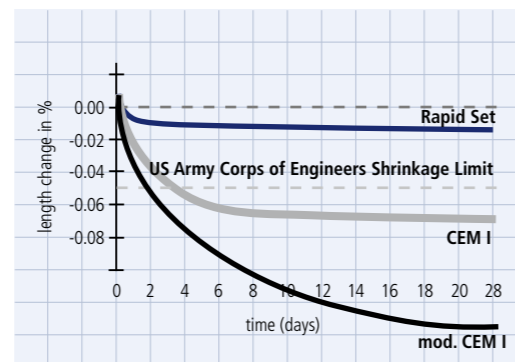
Strength



Rapid Set® – very high strength values after final set

The above graphic shows clearly improved high early strength development of a Rapid Set® based system, specially in comparison to conventional Portland cements (CEM I) and modified Portland cements (accelerated). After 1 hour and final set a compressive strength of > 20,0 N/mm² is definitely achieved.

Shrinkage



Rapid Set® – clearly less shrinkage than Portland cement

The above graphic shows typical shrinkage process of conventional binders (CEM I and mod. CEM I) in comparison to the Rapid Set® Technology. In the U.S. the limit value for non-shrinkage ranges at < 0,05 % (US Army Corps of Engineers Shrinkage Limit). This is definitely achieved with the Rapid Set® Technology.

Safe Traffic Routes with Rapid Set®

The use of Rapid Set® products accelerates the repair of traffic infrastructures and minimizes downtimes.



ASPHALT REPAIR MIX is a high-grade repair mix for the fast, easy and durable repair of asphalt damage.



Repair of parking lot with ASPHALT REPAIR MIX



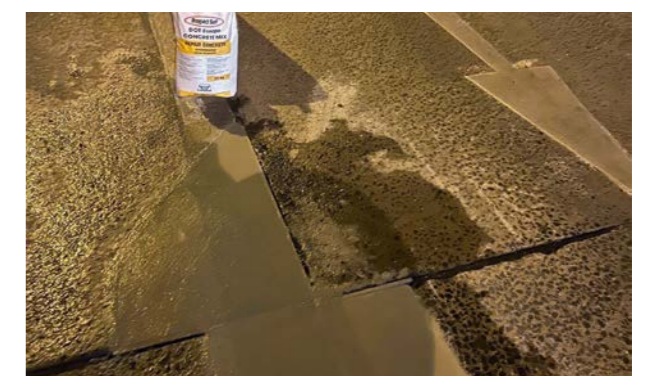
Renovation of shoulder with MORTAR MIX on a busy transit route in Poland



Barrier-free pavement repair with MORTAR MIX in Amberg, Germany



Repair of a concrete roadway with CONCRETE MIX in Frankfurt, Germany



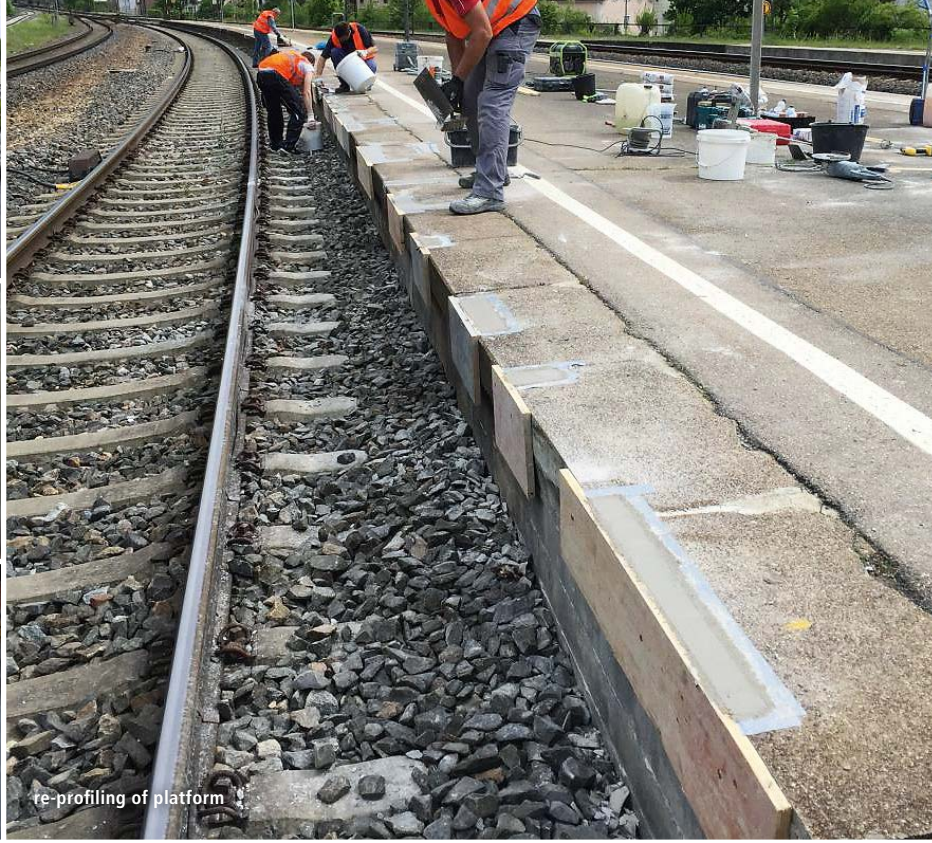
Road repair with DOT Europe CONCRETE MIX in Vienna, Austria

- ✓ HIGHER PERFORMANCE
- ✓ FASTER SETTING
- ✓ MORE DURABILITY
- ✓ MULTIPURPOSE
- ✓ LESS SHRINKAGE
- ✓ LESS CO₂ EMISSIONS





liquid-tight repair at gas station



re-profiling of platform



pipe repair



filling of ceiling joints



bridge abutment



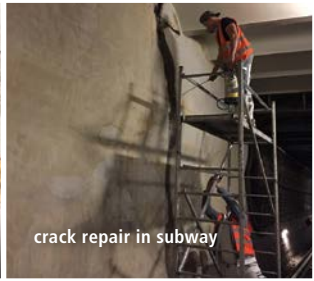
new ramp



concrete corrosion (before repair)



grouting of steel column



crack repair in subway



repair shaft head



repair of feeding table



concrete corrosion (after repair)



renovation of threshold



re-profiling reinforced concrete columns



bridge repair



grinding, smoothing or structuring



quick outside repair of parking area



repair at airport (removal and installation overnight)



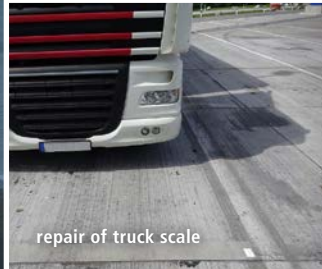
barrier-free pavement repair



runway repair at airport in Northern Scandinavia



stairway renovation



repair of truck scale



Be a game changer !



CEMENT ALL® Plus

mineral, synthetic-modified, fast-setting repair mortar with elevated resistance to carbonation for statically relevant repair work acc. to DIN EN 1504-3



DOT Europe CONCRETE MIX

polymer-modified, fast-setting, fiber reinforced repair concrete for statically relevant concrete repair acc. to DIN EN 1504-3



MORTAR MIX Dur

mineral, fast-setting repair mortar with hard aggregates acc. to DIN 1100, wear resistance A6 acc. to Boehme



LevelFlor®

innovative, self-leveling floor underlayment for interior and exterior use

KORODUR International GmbH

Werner-von-Braun-Str. 4

92224 Amberg, Germany

Phone: +49 (0) 96 21 / 47 59 - 0

E-Mail: info@korodur.de

Cert.: DIN EN ISO 9001:2015



www.korodur.de

