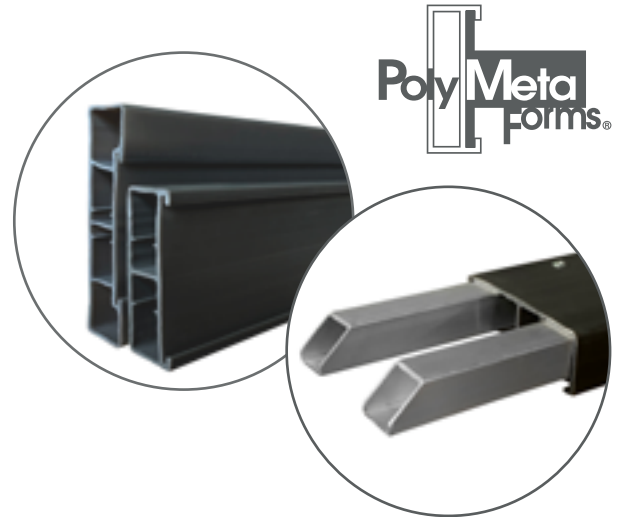


Poly Meta Forms[®]

Save Time, Labour and Money with Poly Meta Forms

Speedcrete introduces Poly Meta Forms[®] the light weight, flexible alternative to traditional wood forming. Weighing 50% less than wood and having uniform heights makes poly forms the simple choice when forming superb curved slabs for irregular shaped applications.



Two Styles of 12ft lengths (3.65 meters)

Radius: Flexible to 3' radius.



Straight: Rigidity of timer forms.

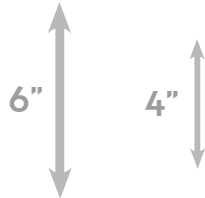




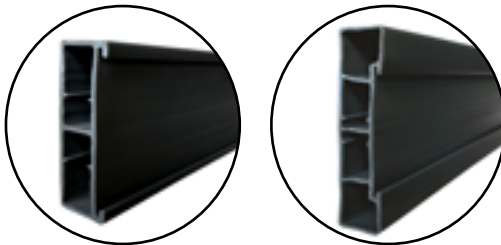
The Poly Meta Forms® system is a labour and money saving alternative to forming concrete with wood. The unique system utilizes plastic forms in conjunction with steel stake pockets to place concrete in areas which require a combination of curves and straight areas.

Sizes

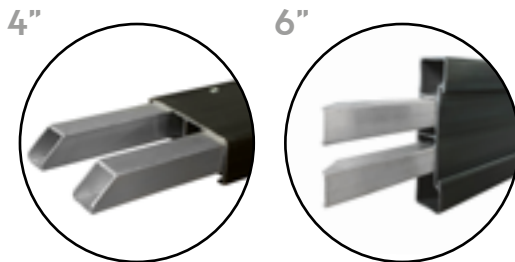
- 4" & 6" heights
- Uniform size heights compared with timber forms



The radius flexible comes in two height sizes, 4" & 6". Both are supplied in the standard length of 12 ft.



The Straight Poly Meta Forms come in two height sizes 4" & 6" both are supplied in the standard length of 12 ft.



Material - Bapolene® HDPE
high density polyethylene co-polymer

- Moisture resistant
- Light weight
- Reusable
- Easy to clean
- Will not warp or twist



The aluminium used in the straight Poly Meta Forms allows the material to be light weight whilst allowing a rigidity equal to timber forms.



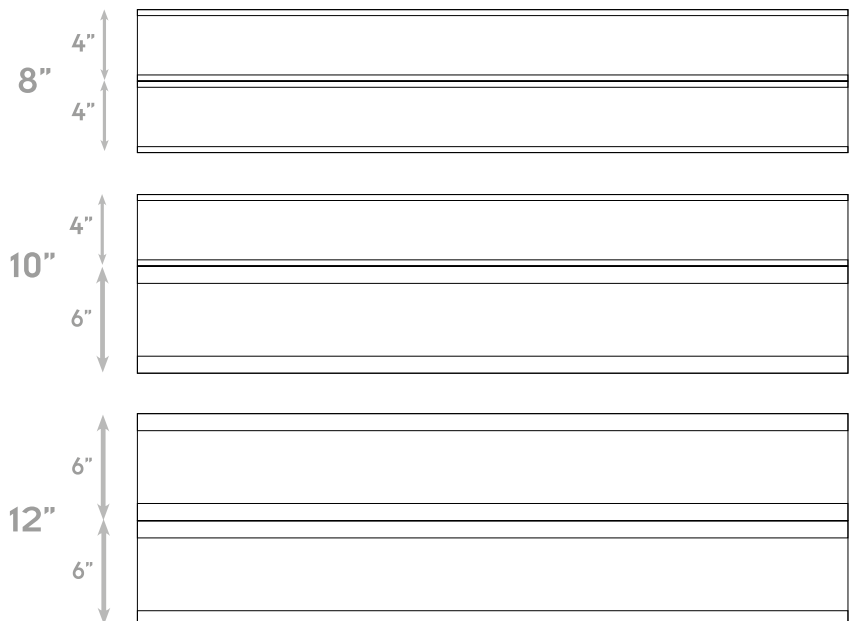
Poly Meta Forms are made from a high density polyethylene copolymer. For every ton of HDPE that is recycled, over 7 metric tons of petroleum will be saved.

Stacking

The slide-type "Stacking" pockets permits poly forms to be stacked to achieve heights of 8", 10" and 12".



In the image above you will see a stainless steel Stacking Pocket holding together 2 x 4" height to a combined stacking height of 8". Learn more about how this system works on the next page.



How do you join forms and secure into position ready to pour?

The Poly Meta Forms® system has a range of specially designed Pockets available to purchase. These Pockets are used for stacking forms, and holding forms in place when used in conjunction with stakes.

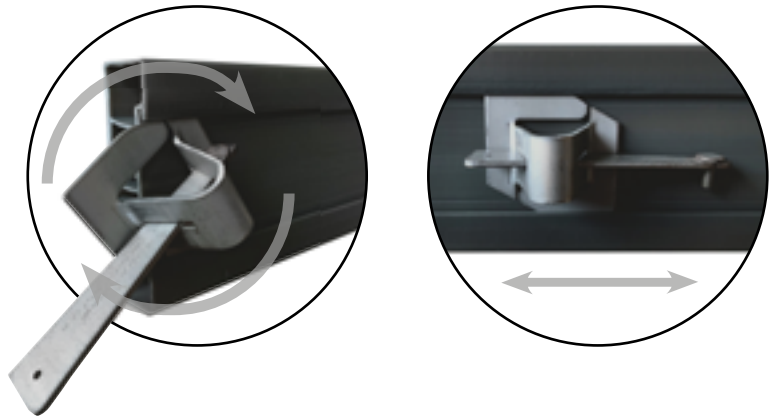


Speedcrete supply the following pockets

Twist Stake Pocket



This pocket can be inserted at any location along the form.



Slide Stake Pocket



The Slide Pocket reinforces the form joint and can be conveniently connection to wood if require in place of a stake with pre-drilled nail holes.

Stacking Stake Pocket



The Stacking Stake Pocket firmly holds two forms in a stacked position, this example in the image on your right shows a stacking pocket connected to a 4" height form awaiting another form to be slid into place.



All products can be found on the Speedcrete website and can be individually purchased for your requirements.