



Thank you for choosing our SCM120 Forced Action Mixer. Your purchase represents the culmination of many years of dedicated research and development, resulting in a professional mixer engineered to deliver high-quality product output and ensure an extended service life. We appreciate your trust in our product.

Before operating the machine, we urge you to take a few moments to familiarize yourself with the machine and its accessories by reading through this comprehensive manual.

This guide is designed to provide you with valuable insights into the optimal use, maintenance, and safety considerations associated with the SCM120 Forced Action Mixer. Your understanding of these details will not only enhance your user experience but also contribute to the longevity and efficient performance of your investment.

Once again, thank you for choosing our SCM120. We are confident that our forced action screed mixer will meet and exceed your expectations for precision mixing in the construction industry. If you have any further questions or require assistance, our customer service team is readily available to support you.

APPLICATION:

The SCM120 Forced Action Mixer stands as the pinnacle solution for the meticulous blending of an extensive array of construction materials, offering unparalleled performance for tasks demanding exacting standards in mix quality. Specifically engineered to meet the rigorous demands of the building industry, this mixer excels in the incorporation of materials featuring up to 3mm aggregates.

(NOTE: The SCM120 Forced Action Mixer is not intended for the amalgamation of materials containing aggregates over 3mm).

Caution is advised when using steel blades for mixing aggregate-rich materials, as the mixer arms may exhibit an upward motion, potentially leading to an interruption in rotation OR GET JAMMED AND EVEN DAMAGE THE MOTOR OR GEARBOX.

PRIOR TO USAGE:

Before initiating the mixer, it is imperative to assemble the Grid Lid (Part No.2) to the Mixer Drum, using the provided Bolt (Part No.22), Flat Washer (Part No.23) and Nut (Part No.24).

The safety switch beside the hinge of the Grid Lid has been adjusted well for its job, so you do not need to adjust the bolt for the safety switch unless it does not work properly.



Before you start the mixer, the Grid Lid has to sit on the mixer drum and be secured by the Rubber Strap. When you unlock the Grid Lid and lift it little bit, the motor will be shut down.



To restart the mixer, you need to do the above again before restart it by pushing the green ON button at the main switch. This switch is below the emergency stop button casing.

PREPARING THE POWER SUPPLY:

Prior to connecting the power, ensure the mixer arms are properly positioned and the Grid Lid is securely closed. The Safety Guard located in front of the Output Gate must always remain in position. Prioritise safety by consistently adhering to the instructions before commencing operations.

OPERATING THE B120 FORCED ACTION MIXER:

Close the Grid Lid and secure it with the provided Rubber Strap. Initiate the mixer by depressing the green START button on the protective motor switch. Then, introduce the materials into the drum step by step, incorporating liquid as needed. The protective motor switch features a zero-voltage releaser, requiring a restart in the event of a power failure. For safety reasons, the mixer will not commence operation if the Grid Lid is left open.

WARNINGS:

Do Not allow your body parts or any other foreign objects into the machine while the power is connected. Once the material is mixed to the desired consistency, promptly empty the mixing drum by opening the mixer gate.

IMPORTANT:

Extended periods of material retention in the mixing drum will result in solidification and machine failure.

Do not remove the Safety Guard in front of the Output Gate. In the event of an obstruction, such as larger stones, disconnect the plug from the motor switch before attempting to clear the obstruction.



Never insert fingers or objects through the Output Gate.



Always wear safety glasses and consider other safety equipment.

CLEANING/ MAINTENANCE:

Before starting the cleaning process, disconnect the plug from the socket. Open the Grid Lid and carefully lift the mixing arms (while turning clockwise) off the axle. Commence the cleaning process by thoroughly washing the mixer arms and blades, and the entire mixing drum with water. Upon completion of cleaning, reattach the mixer arms (leave it down while turning anti-clockwise) to the axle and securely close the lid.



Power must be disconnected before any cleaning or maintenance.



Open the lid.



Remove the mixing arms.



With the mixing arms removed begin the cleaning procedure.

TRANSPORTATION:

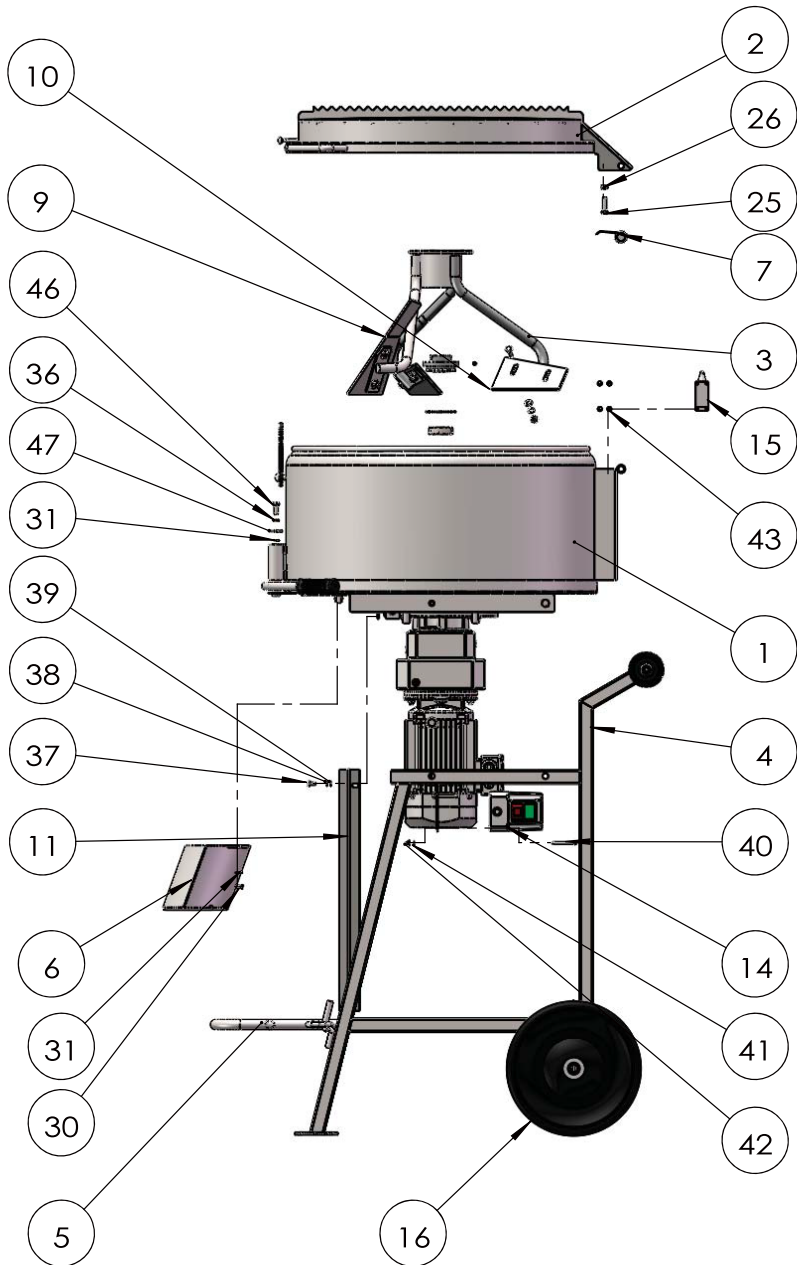
During transportation of the B120 Forced Action Screed Mixer, it is strongly recommended to position the mixer on all four wheels, securing the Grid lid using the provided rubber strap.

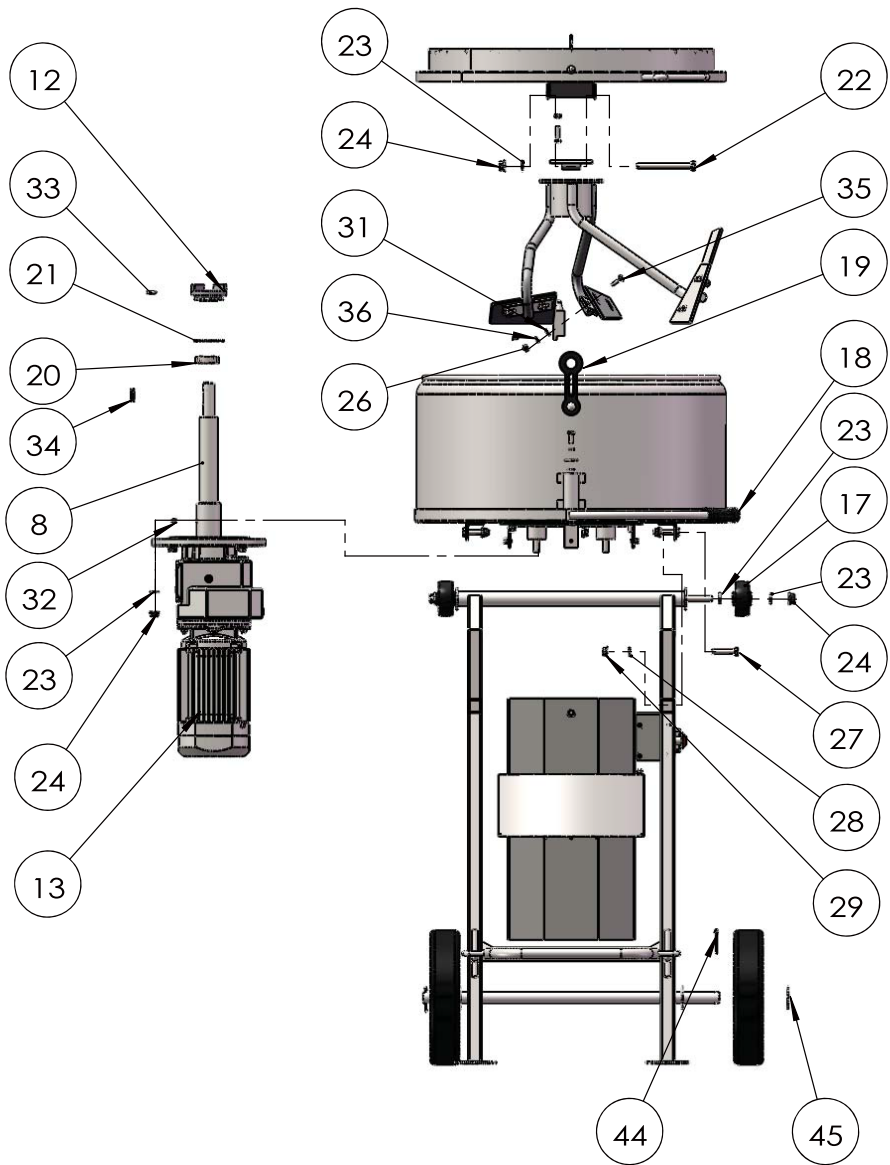
CABLE SAFETY:

When utilising an extension cable, adhere to the following guidelines,

- Restrict the cable length to a maximum of 10 meters
- Utilise a cable with a minimum dimension of 1.6 mm²
- Avoid using a rolled-up cable; ensure it is fully extended

For spare parts please refer to the diagrams and listing on the next 4 pages.





PARTS LIST

No.	Part Name	Q'ty/Unit	Specification
1	Drum	1	
2	Grid Lid	1	
3	Mixing Arms	1	
4	Frame	1	
5	Bucket Bracket	1	
6	Gate Chute	1	
7	Safety Switch Lid	1	
8	Transmission Shafet	1	
9	Blade A	1	
10	Blade B	2	
11	Motor Cover	1	
12	Lower Coupling	1	
13	Motor and Gearbox	1	
14	Switch	1	
15	Safety Switch	1	
16	Wheel	2	12 inch
17	Climbing Wheel	2	4 inch
18	Handle Grip	1	Φ16mm
19	Rubber Strap	1	
20	Bearing	1	6205-2RS
21	Sealing Ring	1	60*Φ3.1mm (inner dia)
22	Bolt	1	M12*120mm
23	Flat Washer	9	Φ12mm
24	Self-lock Nut	7	M12

Parts list continues on the next page...

PARTS LIST

No.	Part Name	Q'ty/Unit	Specification
25	Bolt	1	M8*30mm
26	Nut	7	M8
27	Bolt	4	M10*50mm
28	Flat Washer	4	Φ10mm
29	Self-lock Nut	4	M10
30	Self-lock Nut	2	M8mm
31	Flat Washer	9	Φ8mm
32	Inner Hexagon lock Pin	1	M8*6mm
33	Inner Hexagon lock Pin	1	M6*20mm
34	Lock Key	1	8*30mm
35	Dome-headed Square-necked Bolt	6	M8*25mm
36	Spring Washer	7	Φ8mm
37	Hexagon Bolt	3	M6*12mm
38	Spring Washer	3	Φ6mm
39	Flat Washer	3	Φ6mm
40	Dome-headed Cross Bolt	2	M5*50mm
41	Flat Washer	2	Φ5mm
42	Self-lock Nut	2	M5
43	Flat-head Cross Bolt	4	M5*10mm
44	Split Pin	2	Φ5*40mm
45	Wheel Washer	2	B1.8*Φ27*Φ50mm
46	Hexagon Bolt	1	M8*20mm
47	Big Flat Washer	1	Φ35*Φ9*3mm



SPECIFICATIONS:

Model No: SCM120

motor: 110v/50Hz 1.2kW

Drum Capacity: 120L

Yield: 96L

Weight: 118kg

LAeq < 75dB(A) with mortar.

WARRANTY TERMS AND CONDITIONS:

The SCM120 Forced Action Mixer is covered by a warranty of 12 months from the date of purchase. To initiate a warranty claim, a valid receipt of purchase must be supplied.

The warranty covers manufacturing defects and faults under normal use conditions. Damage caused by misuse, neglect, or unauthorized modifications is not covered under the warranty. For warranty-related inquiries, please contact our customer service with your proof of purchase readily available.

Head Office Address:

1 Ashfield Trading Estate, Ashfield Road, Salisbury,
Wiltshire, SP2 7HL

Email: sales@speedcrete.co.uk

Phone: +44 (0)1722 416 196

